

Women and Girls with Bleeding Disorders (WGBD) face unique challenges. In order to optimise diagnosis, care and management of WGBD, the EAHAD Women and Bleeding Disorders Working Group have developed the following Principles of Care (PoC):



Equitable access and quality of care for all individuals with bleeding disorders, irrespective of gender



Timely and accurate diagnosis of bleeding disorders in women and girls



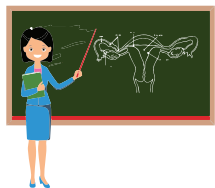
Awareness of the additional challenges faced by WGBD throughout life



Comprehensive care of bleeding disorders requires a family centred approach which includes WGBD



Inclusion of a dedicated obstetrician and gynaecologist in the multidisciplinary team



Education of WGBD and their families regarding the menstrual cycle and management



Early recognition and optimal management of heavy menstrual bleeding



Provision of preconception counselling and access to prenatal diagnostics



Provision of a patient centred comprehensive management plan throughout pregnancy and the post partum period



Involvement of WGBD in registries, clinical research and innovation