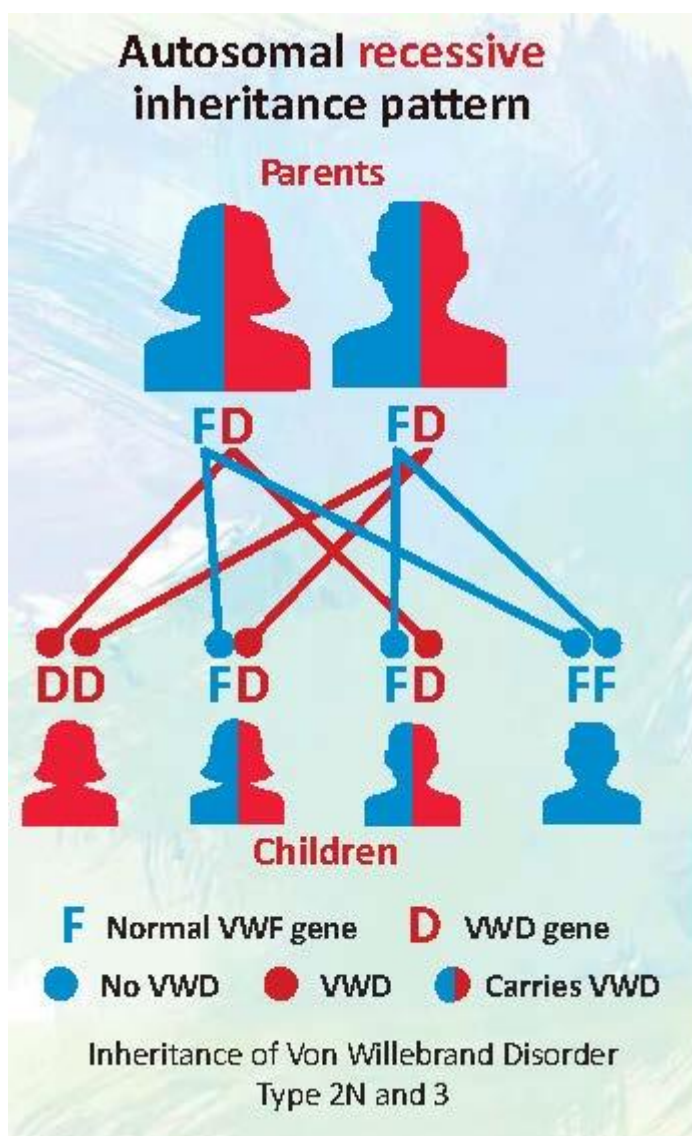
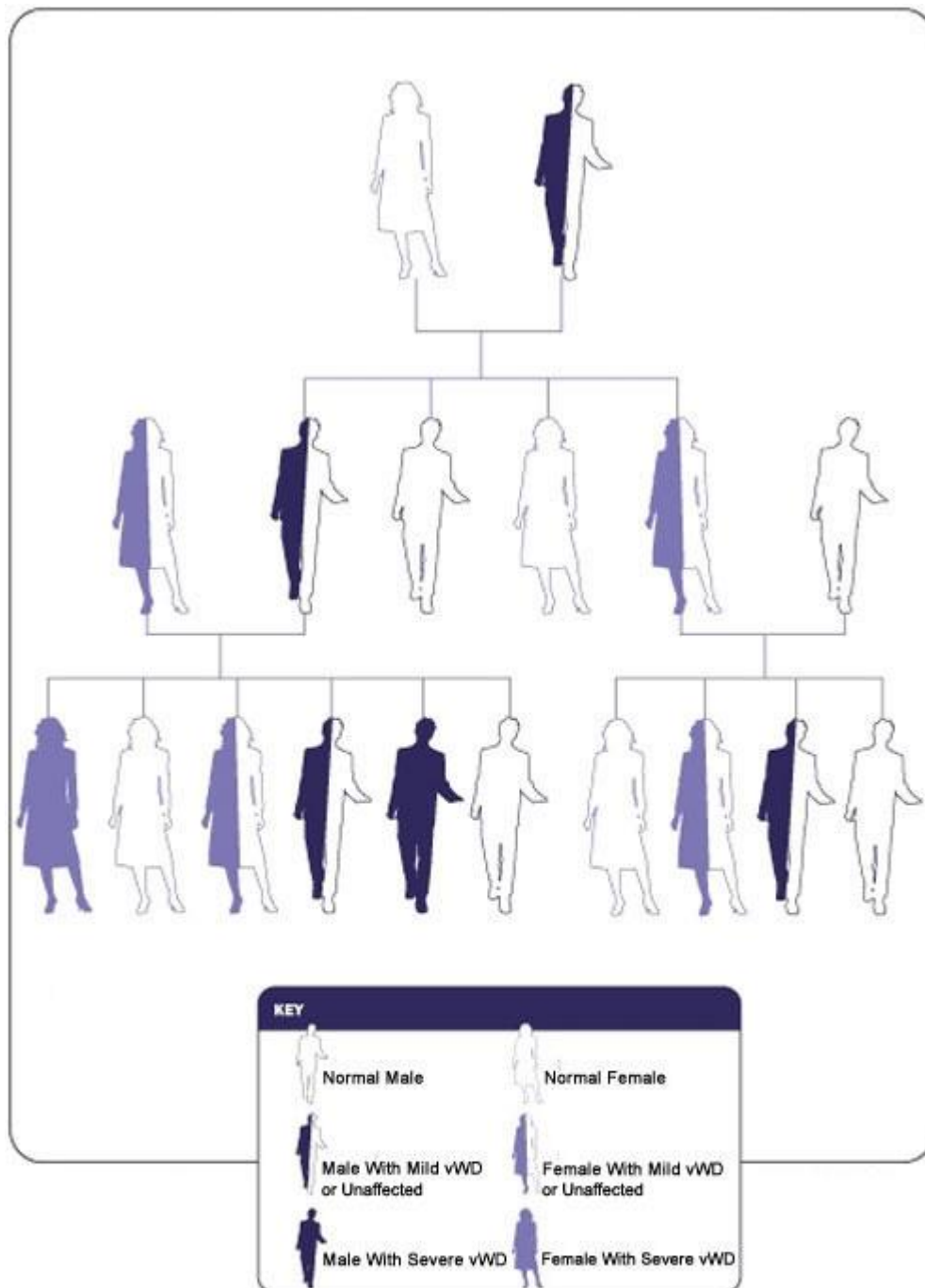


Von Willebrand Disease **AUTOSOMAL RECESSIVE INHERITENCE PATTERN**

For type 2N and 3





Inheritance of Type 3 VWD and Type 2N VWD

Type 3 is the least common type of VWD and is caused by having both changed genes. This is a recessive inheritance pattern. Recessive means that a person must inherit two changed copies of the gene in order to have Type 3 VWD. If both parents have mild VWD and have a child together there is a 25% chance that the child will inherit both changed genes (one from each parent) and have Type 3 VWD.